



**ARMFORD  
ESTATES**



ASKING PRICE

**£1,395,000**

**Seymour Place**

London, W1H 2NL



## PROPERTY SUMMARY

Experience opulent living in the heart of Marylebone, newly renovated, super luxury apartment. 3 spacious bedrooms, 2 luxurious bathrooms, and a wealth of amenities, the perfect blend of sophistication and comfort. Ample natural light, Immaculate kitchen with state-of-the-art appliances. Prime location in Marylebone offering easy access to transportation. Ideal for individuals or families seeking refined urban living, rare opportunity to reside in one of London's most coveted locations.

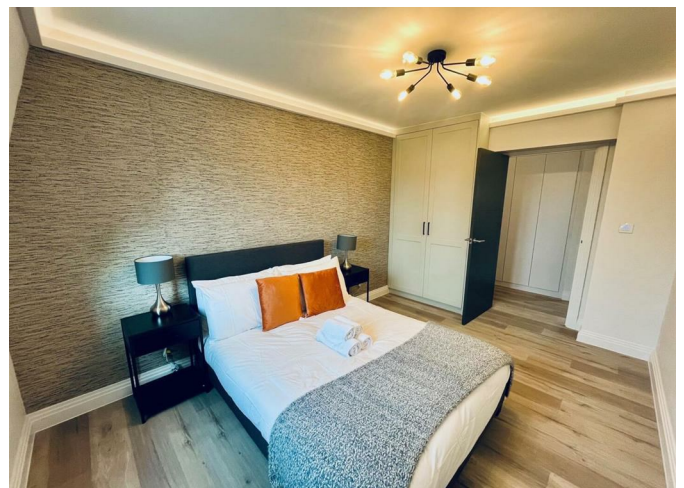
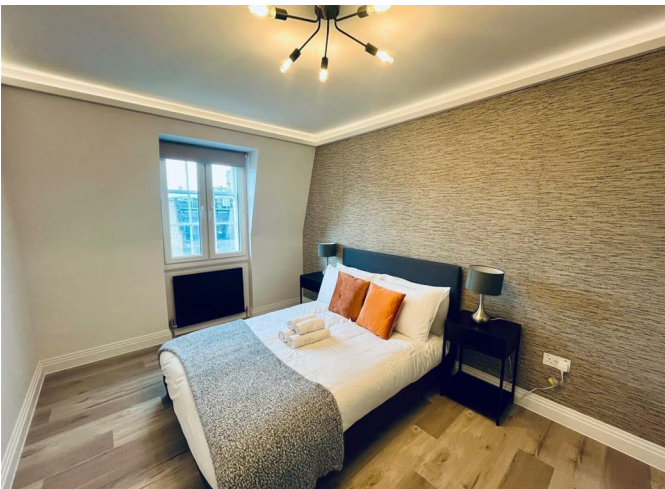
3



2

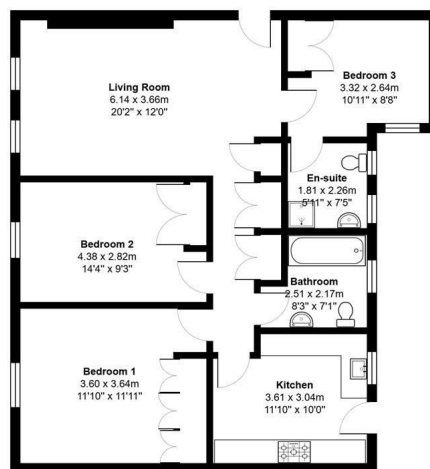


2







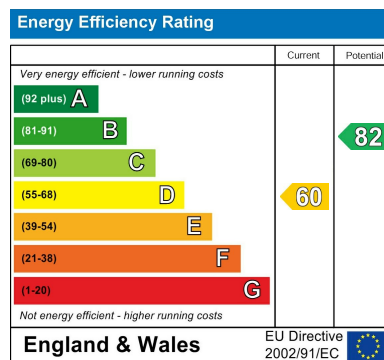


Total Area: 88.7 m<sup>2</sup> ... 955 ft<sup>2</sup>  
All measurements are approximate and for display purposes only

3

2

2



**EPC RATING: D    COUNCIL TAX BAND: F**

Agents Note: Whilst every care has been taken to prepare these particulars, they are for guidance purposes only. All measurements are approximate and are for general guidance purposes only and whilst every care has been taken to ensure their accuracy, they should not be relied upon and potential buyers/tenants are advised to recheck the measurements



**ARMFORD  
ESTATES**

**OFFICE ADDRESS**  
Great Western Studios,  
Unit 19 65 Alfred Road,  
W2 5EU  
London  
W2 5EU

**OFFICE DETAILS**  
0203 597 6887  
info@armfordestates.com  
<https://www.armfordestates.com/>